

Preliminary

Ruby Lake Pompeii



2,104 - 2,802 A/C Sq. Ft. | 3 Bedrooms | 2.5 - 3.5 Baths | 2-Car Garage



Elevation 4



Elevation 4 Loft

Emerald Series



Elevation 5



Elevation 5 Loft



Elevation 21



Elevation 21 Loft



*Floor plan is reflective of included Elevation 4. Floor plans and drawings shown are preliminary and are subject to error or omissions. See a sales consultant for details. Artist's Conception: These drawings are conceptual only and should not be relied upon as a representation, express or implied of the final detail. The developer expressly reserves the right to make modifications, revisions, and changes which it deems desirable in its sole and absolute discretion. Due to normal construction tolerances, square footage may vary. ©2016 Pulte Home Corporation. All Rights Reserved. 7/16 CBC1259130

Pulte.com

Pompeii

2,104 - 2,802 A/C Sq. Ft. | 3 Bedrooms | 2.5 - 3.5 Baths | 2-Car Garage

Preliminary

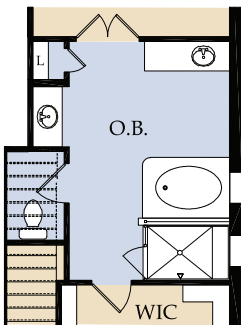
Preliminary



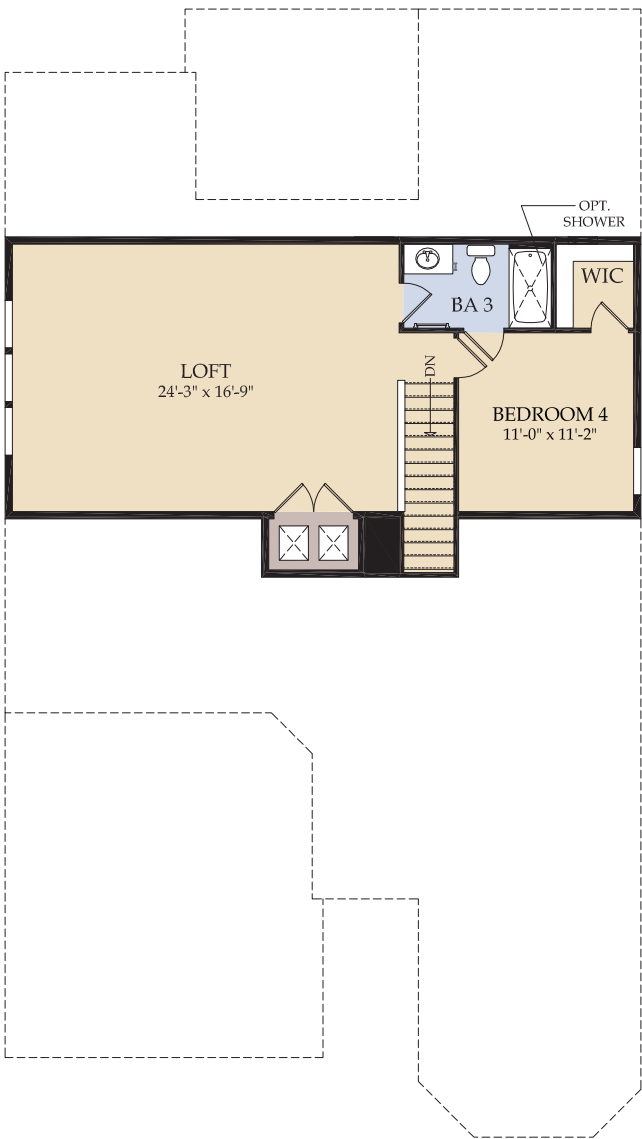
First Floor



Opt. Loft w/ Bedroom & Bath
(First Floor)



Opt. Loft Tub Upgrade 2 Option
(First Floor)



Optional Loft w/ Bedroom & Bath
ADDS 698 SQ FT TO TOTAL LIVING (SECOND FLOOR)

Loft Option

Visit pulte.com/rubylake to access our interactive floor plan online to further customize the options available for this home design, such as:

- Built-in kitchen option
- Den option
- Sliding glass door options
- Extended covered lanai option
- Garage extension
- Optional 12' plate height (without loft)